



## Diversify to deliver

Whether saving for retirement, your children's school fees, a dream holiday, or simply making your money work harder, taking time to organise a well thought out and diversified approach to investing is one of the most sensible and rewarding things you can do.

Still, taking on this task yourself can be very difficult, with so many different and complex types of investments available. It can be hard to see where the best returns are likely to come from, and where there are risks you should avoid.

The 2plan Omnis Managed Portfolio Service (2plan OMPS) offers investors a choice of four separate risk-graded portfolios that provide a straightforward route for achieving a well-diversified and actively managed investment strategy.

# How the 2plan Omnis Managed Portfolio Service works for you

The 2plan Omnis Managed Portfolio Service has been designed to steer your investments through ever-changing financial markets.

The 2plan Omnis Managed Portfolio Service (2plan OMPS) aims to keep your investments aligned to your financial goals and deliver the right outcomes for you on a long-term basis.

Our investment team constantly monitors the performance and fine tunes the composition of the four model portfolios – Cautious, Balanced, Balanced Aggressive and Aggressive – built around your attitude to risk. Each portfolio invests in various Omnis funds that are run by a selection of some of the best asset managers in the business. These funds are run on an active basis, which means the managers are free to select the individual investments they think will help them to outperform their segment of the market.

## Strategic asset allocation

Each of the four portfolios has what we call a 'strategic asset allocation'. This is the framework for the mix of the diverse types of investments in each portfolio.

The aim is to provide the level of diversification we consider appropriate to deliver strong returns while always staying true to the portfolio's, Cautious, Balanced, Balanced Aggressive or Aggressive risk profile.

The strategic asset allocation of each portfolio can be adjusted by the investment team to reflect market conditions. However, as the name suggests, these allocations are designed to be relatively stable.

Day-to-day, the investment team can increase or decrease these asset allocations to fine tune each portfolio. This active or 'tactical' management is what really sets 2plan OMPS apart from more passive types of investment as it is through making these regular adjustments that additional growth can be achieved.

## Meet the Investment Team



**Toni Meadows** has 25 years' experience in financial services, most of which have been spent managing client portfolios. He has held senior roles at leading investment management businesses, and has established and managed multi-asset portfolios, as well as managing research, portfolio construction and risk and operational teams.



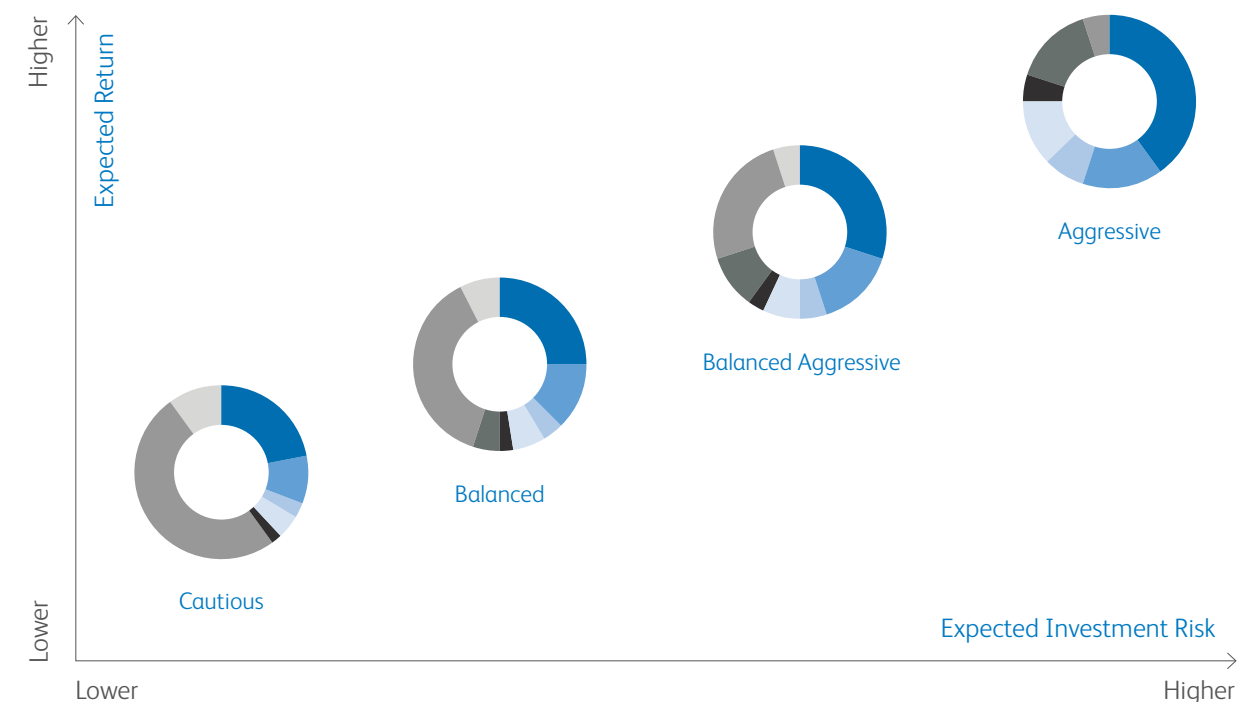
**Colin Gellatly** has 11 years' experience in investment management, the past four of which have been spent at Omnis. Throughout his career, he has specialised in tactical asset allocation strategies for multi-asset portfolios, as well as being heavily involved in fund manager selection and portfolio risk analysis.



**Jonathan Gosling** has 7 years' experience in financial services, mostly performing investment research for discretionary multi-asset investment portfolios including working in Shanghai where he gained valuable insight into Chinese macroeconomics.

# The portfolios in comparison

Below are illustrations of the strategic asset allocation of each of the portfolios\*.



### 2plan OMPS - Cautious

- 22% UK Equities
- 9% US Equity
- 2.7% European Equity
- 4.5% Japanese Equity
- 1.8% Asia Pacific ex Japan
- 50% Fixed Interest
- 10% Alternative Strategies

### 2plan OMPS - Balanced

- 25% UK Equities
- 12.5% US Equities
- 4% European Equity
- 6% Japanese Equity
- 2.5% Asia Pacific ex Japan
- 5% Emerging Markets Equity
- 37.5% Fixed Interest
- 7.5% Alternative Strategies

### 2plan OMPS - Balanced Aggressive

- 30% UK Equities
- 15% US Equity
- 5% European Equity
- 7% Japanese Equity
- 3% Asia Pacific ex Japan
- 10% Emerging Markets Equity
- 25% Fixed Interest
- 5% Alternative Strategies

### 2plan OMPS - Aggressive

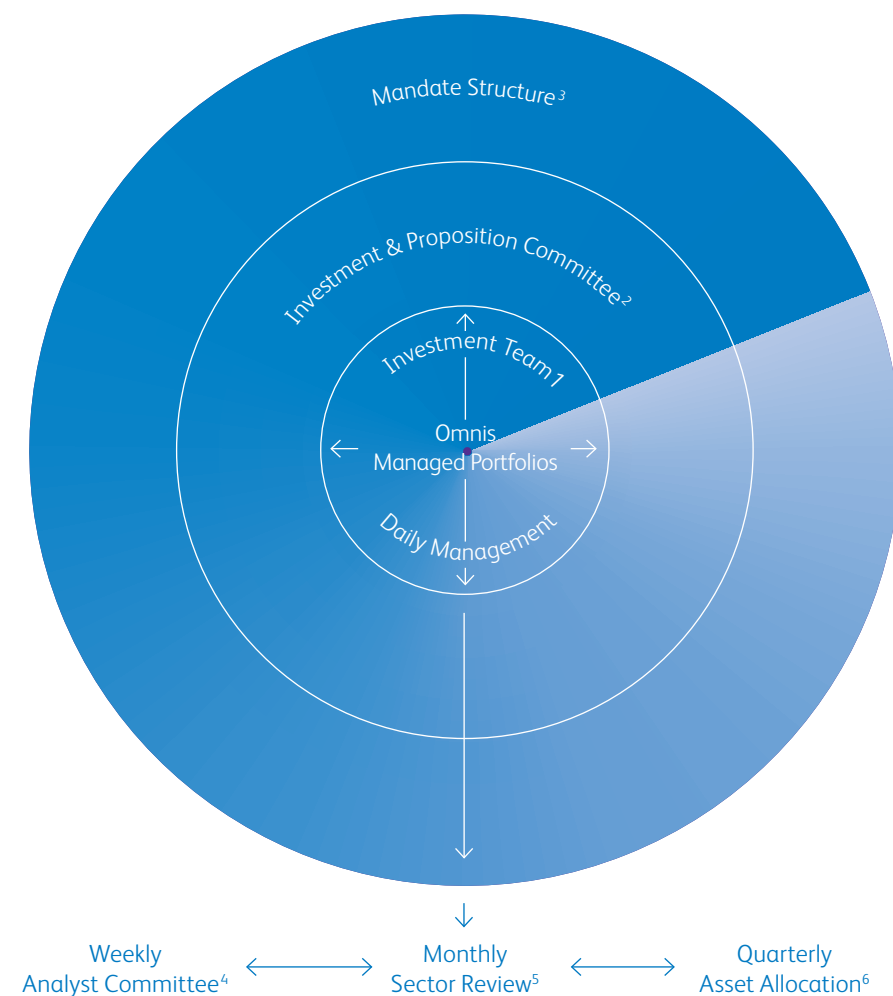
- 40% UK Equities
- 15% US Equities
- 8% European Equity
- 12% Japanese Equity
- 5% Asia Pacific ex Japan
- 15% Emerging Markets Equity
- 5% Fixed Interest

\*Strategic asset allocations in May 2019.



## Keeping your investments in order

Your investment is protected by a robust governance process.



<sup>1</sup> The investment team looks after your money through daily active management of the portfolios.

<sup>2</sup> The Investment and Proposition Committee meets at least monthly, and includes senior management, as well as independent insight from global leading investment consultant Mercer.

<sup>3</sup> The Mandate Structure is the strict set of parameters within which the investment team can operate to ensure you are not exposed to excess or unnecessary risk.

<sup>4</sup> The Analyst Committee meets weekly and is the investment team's chance to discuss the allocations to the funds and market activity, as well as upcoming economic events.

<sup>5</sup> A Monthly Sector Review puts each of the investment classes under constant scrutiny.

<sup>6</sup> The Quarterly Asset Allocation review looks at all the investment classes in detail to assess their long-term prospects, with these views then translated into fund selection for the model portfolios.

## A closer look at the Omnis funds

The four 2plan OMPS portfolios invest in a range of funds offered by Omnis Investments. The Omnis funds are managed by external investment firms with specialist experience in the relevant markets.

The fund managers have been selected by Omnis following a rigorous selection process. Using a wide range of market data and expert independent analysis, the investment team oversees each of the funds, and if any of the fund managers fail to deliver over the long term, they can be replaced. The advantage of this approach is that should it be appropriate to replace any fund manager, this can be done without the need to move your money from one fund to another. It remains invested in that particular Omnis fund and we simply put a new fund manager in charge of running it.

The investment team works closely with each of the Omnis fund managers and has full visibility of the composition of each of the funds. So, as potential opportunities and threats emerge and market conditions evolve, the team understands how each of the fund managers are responding. Having this depth of relationship with each of the fund managers is a key strength of 2plan OMPS, enabling the investment team to adjust the balance of the portfolios when appropriate.

Additionally, the investment team may, from time to time, tactically hold some of a portfolio's assets in cash.

# The funds in full

The current range of Omnis funds are shown below. New funds may be added to the range to take advantage of investment opportunities in other asset classes.



## Omnis UK Gilt Fund

This fund invests in UK government bonds, also known as gilts. Bonds are an important asset class to include in a portfolio, as they offer diversification from equities. Columbia Threadneedle Investments is one of the largest asset managers in the UK, managing nearly £350 billion for clients globally\*.

*\*As of 31 March 2018*



## Omnis Strategic Bond Fund

This fund has a mix of bonds issued by governments, those issued by companies with a minimal credit risk, and 'high-yield' bonds which carry slightly more risk that is compensated for by higher income. Fidelity International is one of the largest asset managers in the world. It looks after £307.2 billion from over 2.2 million clients across Asia Pacific, Europe, the Middle East, and South America\*.

*\*As of 31 March 2018*



## Omnis UK Smaller Companies Fund

This fund provides exposure to smaller UK companies, typically with market capitalisations of between £100 million and £1 billion, aiming to build long-term value for shareholders. Like the All Companies fund, it looks for attractively-priced stocks with strong balance sheets and sustainable cash flows.



## Omnis European Equity Fund

This fund's investment process is based on seeking high-quality businesses at reasonable prices. Jupiter has a strong reputation for managing European equities with the goal of achieving long-term growth. The managers are given the flexibility to invest as they see fit, within the funds' investment remits and restrictions.



## Omnis Sterling Corporate Bond Fund

This fund invests in UK corporate bonds which are issued by companies seeking to raise finance, for example to expand operations. It aims to reduce the risk of default by focusing on investment-grade bonds and thoroughly researching each issuer. Compared to gilts, corporate bonds offer higher potential rewards but carry greater risk.



## Omnis UK All Companies Fund

This fund invests in predominantly large cap but also mid and small-sized UK companies that appear attractively priced and have strong balance sheets and sustainable cash flows. Franklin Templeton is one of the biggest names in investing, with a history stretching back over 70 years and over £570 billion in assets under management\*.

*\*As of 31 May 2018*



## Omnis Emerging Markets Equity Fund

This fund provides access to developing markets like Brazil, Russia, India and China. The focus is on companies undergoing positive changes that have not been recognised by the stock market. Founded in London in 1985, Jupiter Asset Management has nearly £50 billion in assets managed\*.

*\*As of 30 June 2018*



## Omnis Alternative Strategies Fund

This fund acts as a unique diversifier from equities and bonds. It uses alternative investments, such as commercial property, commodities, emerging market bonds, and infrastructure to help deliver a more consistent, predictable investment journey. Octopus Investments was founded in 2000, and now employs over 500 professionals with over £8 billion in assets managed\*.

*\*As of 30 June 2018*



## Omnis UK Equity Income Fund

This fund looks to invest in superior quality companies with strong business models and sound finances that are able to deliver sustainable dividend growth, and therefore greater income. Royal London Asset Management manages over £110 billion of client assets, across all major asset classes\*.

*\*As of 14 August 2018*

## Schroders

### Omnis Japanese Equity Fund

This fund invests in undervalued but good quality Japanese stocks, with a slight bias towards small and medium-sized companies, generating strong potential earnings growth and providing earnings visibility over the long term. The fund targets companies that exhibit some form of competitive advantage, such as a technological edge or dominant market share.



### Omnis Asia Pacific (ex-Japan) Equity Fund

This fund aims to deliver strong real returns and relative returns over time by adopting a thematic approach and investing in stocks benefiting from structural trends in Asian economies. Veritas Asset Management was founded in 2003 and manages over £17 billion in client assets\*.

*\*As of 31 July 2018*



## A global reach

Each of our four portfolios are managed on a daily basis by experts whose aim is to deliver consistent returns while managing risk through investing in a wide variety of funds.

Using the funds offered by Omnis Investments, we are able to reach globally across several types of investment, or what are known as 'asset classes'.

These asset classes include equities. Often referred to as 'stocks' or 'shares', they represent a stake in the ownership of a company. Equities are listed on various indices, such as the FTSE 100 in the UK, or S&P 500 in the US.

## Schroders

### Omnis Global Bond Fund

This fund provides exposure to global fixed income and currency markets, providing valuable diversification opportunities. Schroders has a highly experienced team of credit experts based all over the world. With a history going all the way back to 1804, Schroders is one of the largest companies working with Omnis with £426 billion in client assets\*.

*\*As of 31 March 2018*



### Omnis US Equity Fund

This fund primarily invests in high-quality, US companies, many of which are the largest companies in the world. Based in Baltimore in the United States, T. Rowe Price has a history going back to 1937 and currently manages over £800 billion in assets\*.

*\*As at 30 June 2018*



### Omnis Income & Growth Fund

This fund is built around a mix of investment opportunities focused on delivering an attractive long-term investment return for investors, via a combination of capital growth and income. The appointment of Jupiter will result in a blend of the fund managers Jupiter UK Special Situations and Income Trust portfolios.

There are also bonds – sometimes referred to as 'fixed income' securities – which could be described in similar terms as a loan to a company or a government which pays interest. Compared to equities, bonds can offer more protection should the investment environment become more difficult to navigate.

Other, so-called 'alternative' investments could include property, or commodities like natural gases or agriculture, which are all accessed via specialist funds.

## Keeping you informed

As an investor in the 2plan Omnis Managed Portfolio Service, we want to keep you informed. This means providing monthly updates on your portfolio, as well as more in-depth quarterly round-ups and an annual report.

These updates outline what has happened in the markets and what changes the investment team has made to the asset allocation within your portfolio and why, plus a breakdown of where the portfolio is currently invested. The updates are available through your financial adviser or direct from the Omnis Investments section of the 2plan web site (2plan.com) where you can also find more information about each of the Omnis funds within your portfolio.

## Fees

We like to keep things simple, so the cost of providing 2plan OMPS is based on a simple fixed percentage of the value of your portfolio – regardless of how much or how little you have invested with us. Our aim is to deliver long-term investment returns through our active asset management approach that outweighs the cost of the service. Please ask your financial adviser for full details.

It is important to know that our fee is in addition to the fee charged by your investment platform for providing your account, the charges applied by the underlying Omnis funds (which are calculated daily and deducted from the assets of the funds) and any charges for the advice and ongoing service that you have agreed with your adviser. Your financial adviser will explain these charges to you.

## Key risks

The 2plan OMPS provides you with an investment portfolio linked to a number of funds. In common with all investments of this type, the value of your portfolio, and any income from it, will rise and fall in line with market movements and you should be aware that you may not get back the amount you invested.

- Whilst 2plan OMPS aims to minimise losses and to seek additional returns, we cannot guarantee that our tactical decisions will always add value to your portfolio nor protect it from all losses.
- Where underlying funds invest in overseas companies, changes in exchange rates may mean that the value of your investment goes up and down.
- There will be a variation in performance between funds with similar objectives due to the different assets selected.
- Past performance is not a guide to future performance. Over time, inflation may erode the value of your investments.
- Where underlying funds invest in emerging markets, returns may be subject to greater or more frequent rises and falls in value and may be subject to liquidity issues.
- It is important to ensure that an adequate balance is maintained in your cash account on your investment platform to cover all of your charges including any 2plan OMPS fees. If there are insufficient funds available in your cash account, this may result in either a sale of assets from within the 2plan Omnis Managed Portfolio to cover the fee or the fees not being paid, which may ultimately result in you no longer being invested in the portfolio service. You should discuss with your financial adviser how to ensure your cash account is appropriately funded at all times.

## Important information

The 2plan Omnis Managed Portfolio Service (the “Service”) is provided by Openwork Wealth Services Limited (OWSL), a member of the Openwork group of companies. Openwork Wealth Services Limited is authorised and regulated by the Financial Conduct Authority, 12 Endeavour Square, London, E20 1JN. For providing this service, OWSL will receive a fee.

Openwork Wealth Services Limited is registered in England and Wales under registration number 10266077.

Registered Office: Washington House, Lydiard Fields, Swindon, Wiltshire, SN5 8UB.

The Managed Portfolios provided by OWSL will only be invested in funds offered by Omnis Investments Limited, also a member of the Openwork group of companies, and from time to time, cash.

Omnis Investments Limited is the Authorised Corporate Director of the Omnis Managed Investments ICVC and the Omnis Portfolio Investments ICVC. It is authorised and regulated by the Financial Conduct Authority, 12 Endeavour Square, London, E20 1JN. Omnis Investments Limited is registered in England and Wales under registration number 06582314. Registered Office: Washington House, Lydiard Fields, Swindon, Wiltshire, SN5 8UB. As the Authorised Corporate Director of the funds, Omnis Investments Limited is paid an annual management charge from the funds. This charge is part of the Ongoing Charges Figure disclosed in the Key Investor Information Document.

By deciding to invest some or all of your money in the Service, OWSL will manage your portfolio(s) in line with the investment powers and within limits as established by the Openwork Investment & Proposition Committee.

OWSL is required to adhere to its best execution policy which ensures that any deals are notified on a timely basis. Dealing in the underlying funds is the responsibility of Omnis Investments Limited. The policies for both OWSL and Omnis are available at [omnisinvestments.com](https://www.omnisinvestments.com)

All documents will be issued in English.

Neither OWSL nor Omnis Investments Ltd is able to provide advice. The Openwork group of companies also includes 2plan wealth management Limited, which provides investment advice through your adviser.

2plan wealth management Ltd is authorised and regulated by the Financial Conduct Authority. It is entered on the Financial Services Register ([www.fca.org.uk](https://www.fca.org.uk)) under reference 461598.

2plan wealth management Ltd is registered in England and Wales 05998270. Registered Office: 3rd Floor, Bridgewater Place, Water Lane, Leeds, LS11 5BZ

The Openwork Group records and manages its conflicts of interest, the policy of which is available free of charge on request.

If you wish to make a complaint, you can find details of who to complain to and our complaints management process at [omnisinvestments.com/contact-us/complaints](https://www.omnisinvestments.com/contact-us/complaints) where you will also find details of the Financial Ombudsman Service.



2plan wealth management Ltd is authorised and regulated by the Financial Conduct Authority. It is entered on the Financial Services Register ([www.fca.org.uk](http://www.fca.org.uk)) under reference 461598.

2plan wealth management Ltd registered address:  
3rd Floor, Bridgewater Place, Water Lane, Leeds,  
LS11 5BZ. Telephone: 0113 302 1360.